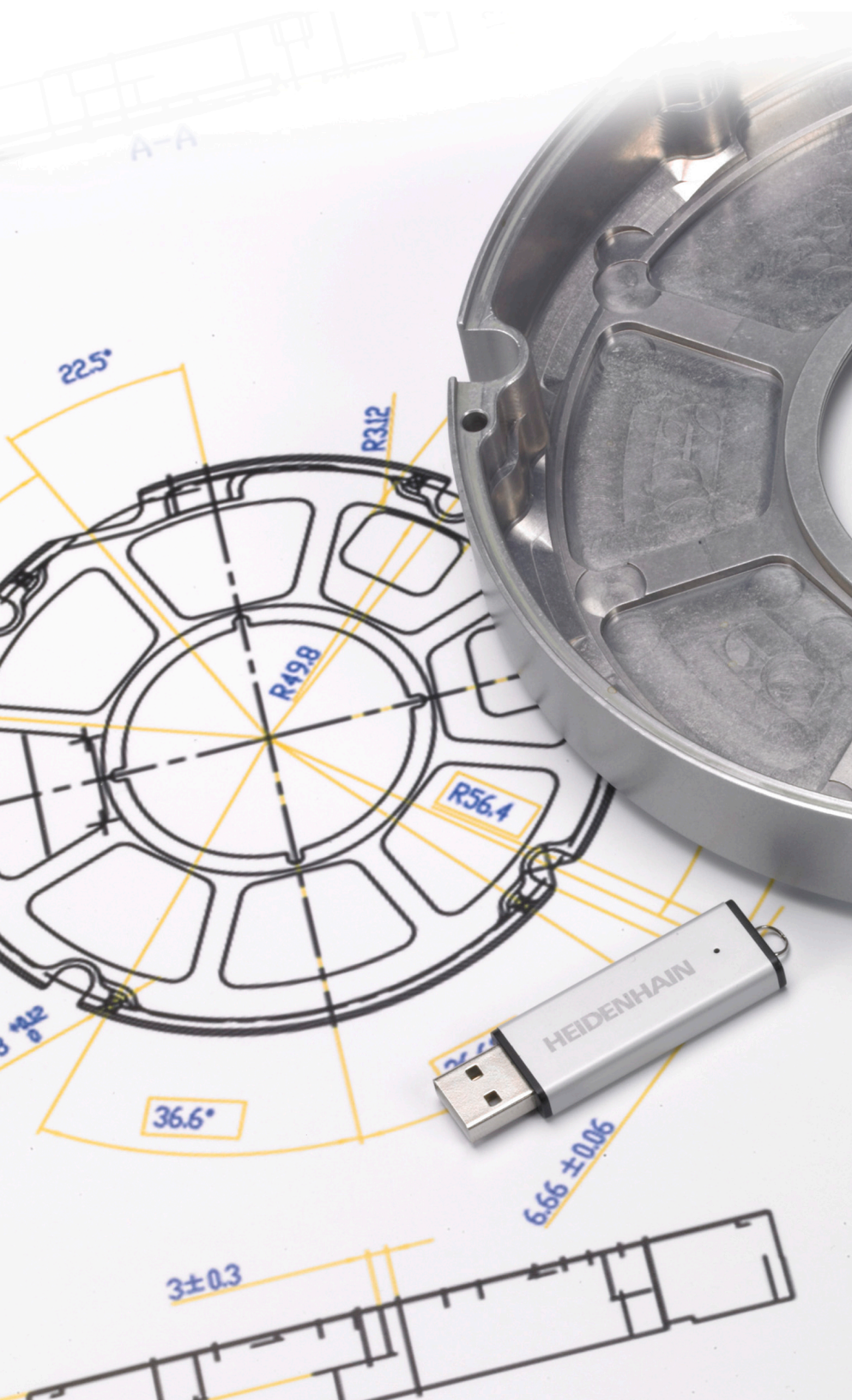




# HEIDENHAIN



## NC-Solutions

Zeichnungssatz 13004

Deutsch (de)  
6/2018

# 1 Zeichnungssatz\_13004

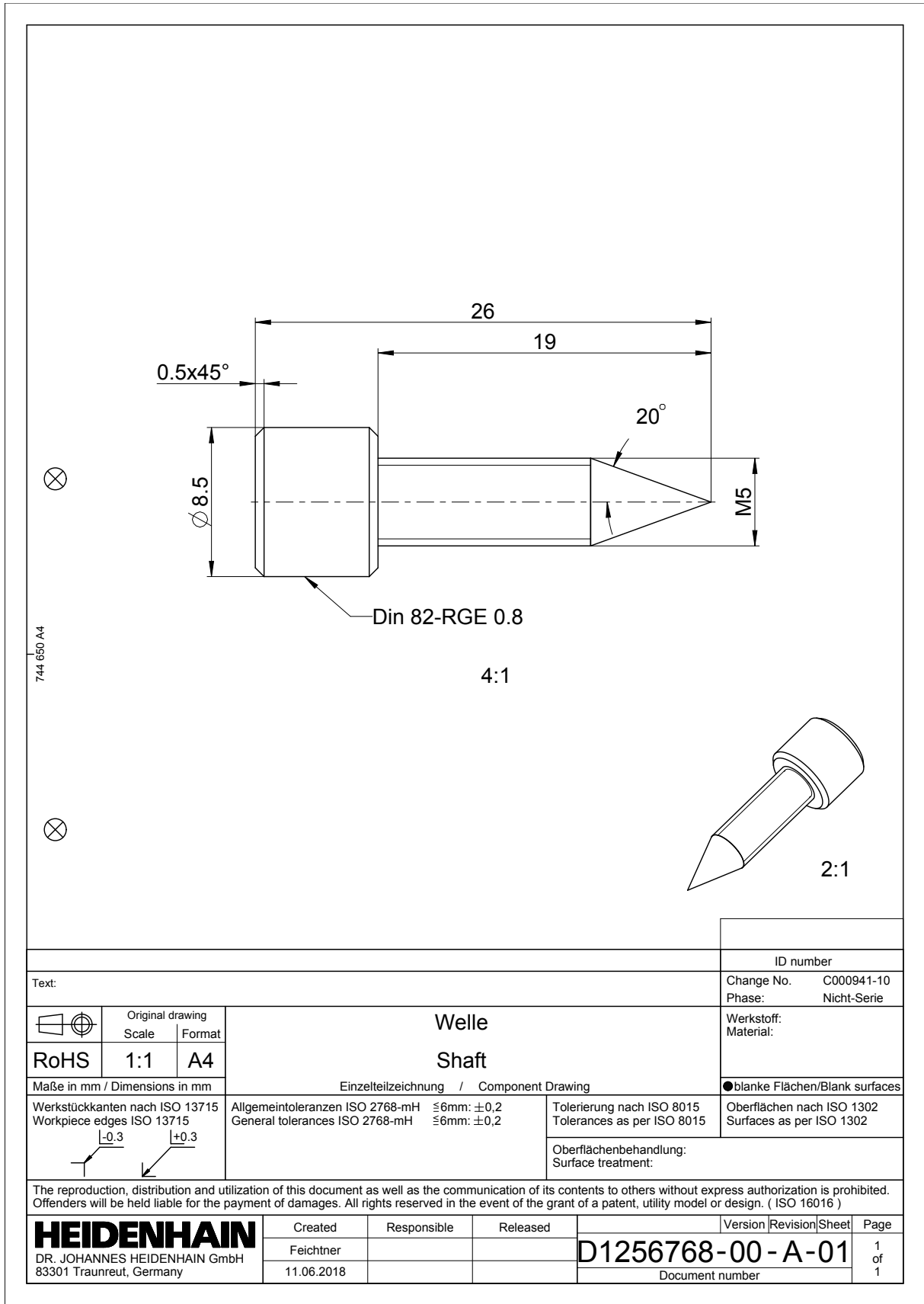
## Stückliste Druckluftmotor

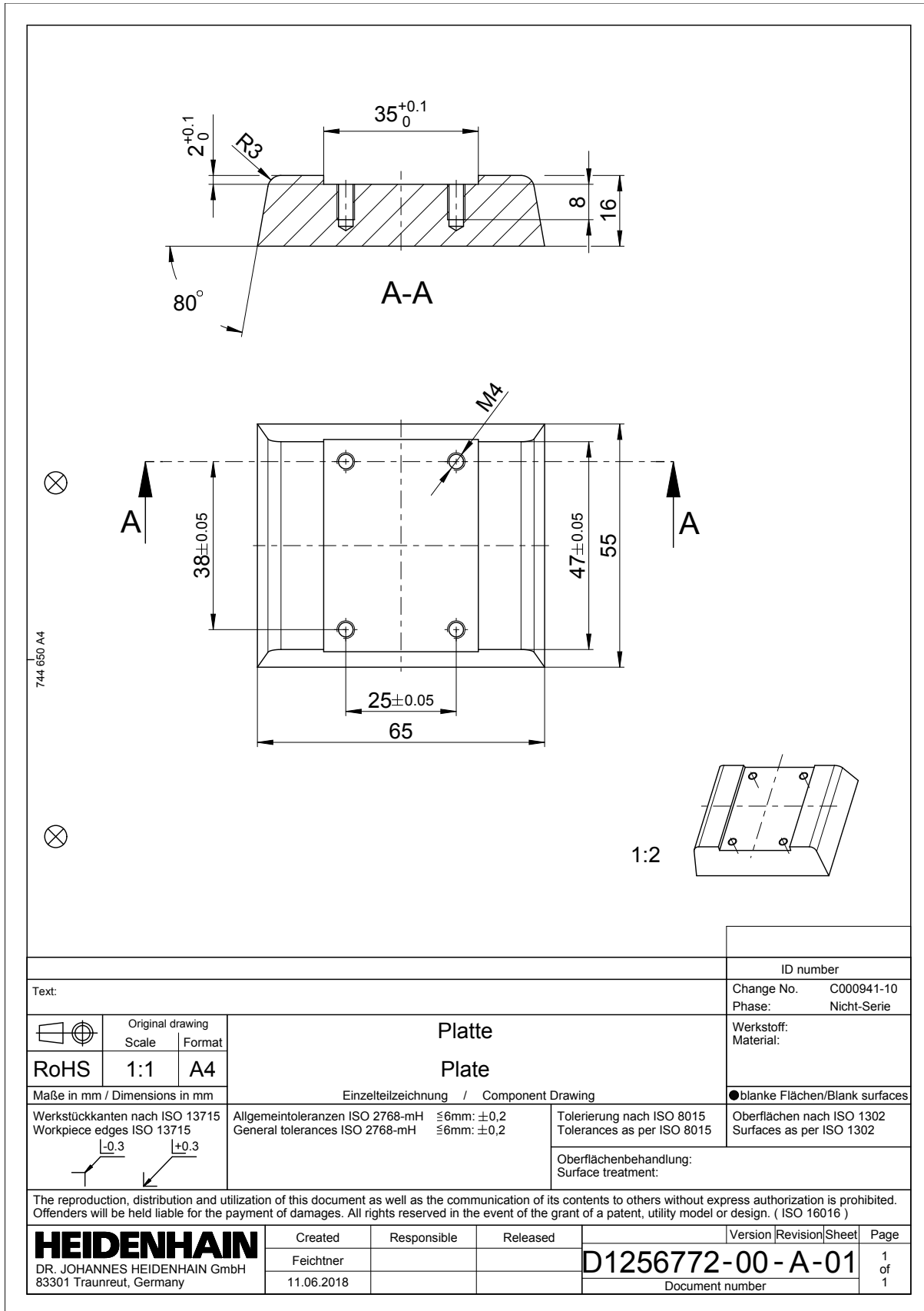
### Fertigungsteile

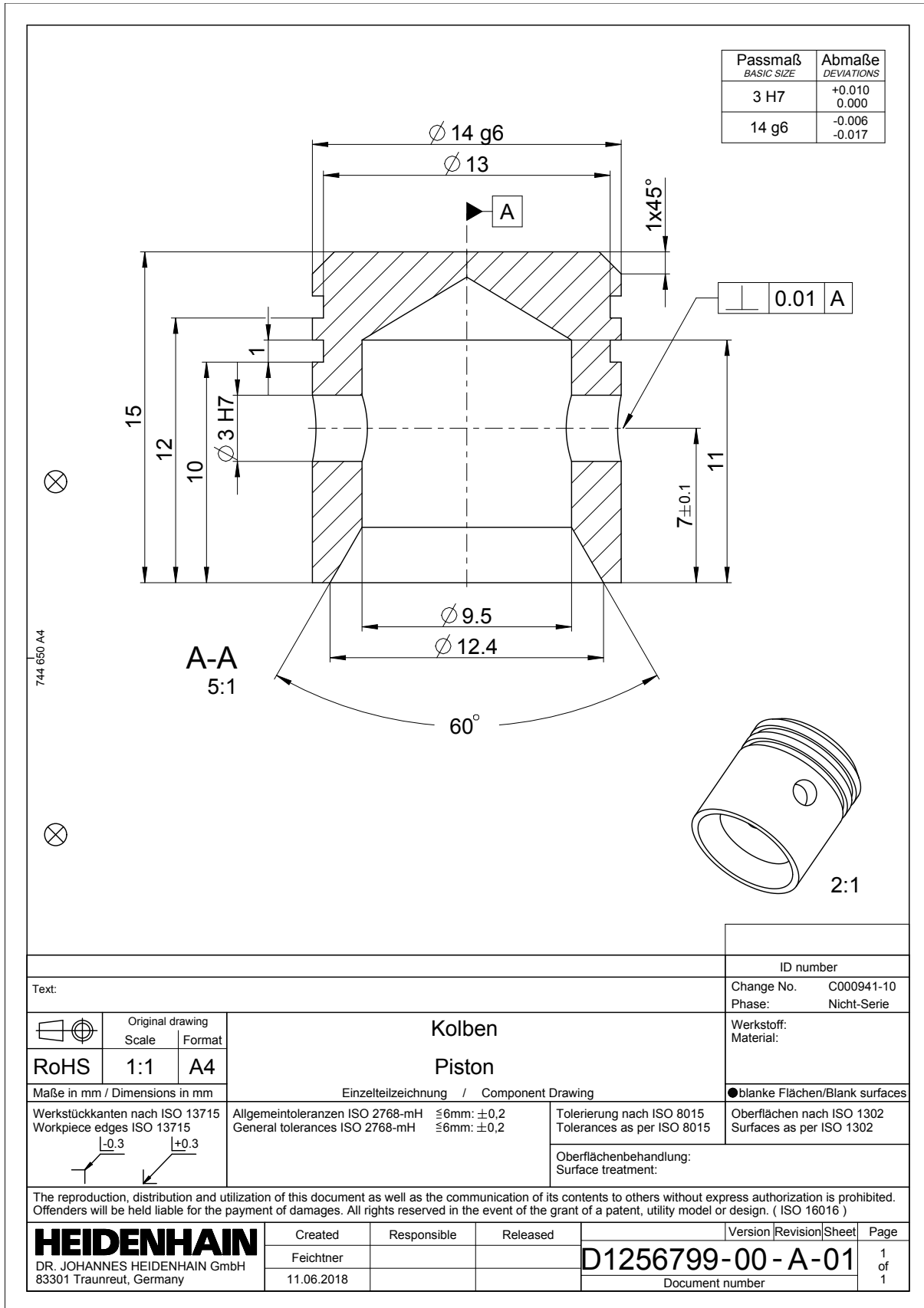
Anzahl	Benennung	Werkstoff	Dokumentnummer
1	Welle	CW508L	D1256768-00
1	Platte	ENAW 2007	D1256772-00
1	Kolben	CW508L	D1256799-00
1	Scheibe	CW508L	D1256806-00
1	Welle	CW508L	D1256807-00
1	Platte	ENAW 2007	D1256809-00
1	Gehäuse	PMMA	D1256812-00
1	Platte	ENAW 2007	D1256815-00
1	Scheibe	CW508L	D1256823-00
1	Welle	CW508L	D1256826-00
1	Gehäusedeckel	PMMA	D1256827-00

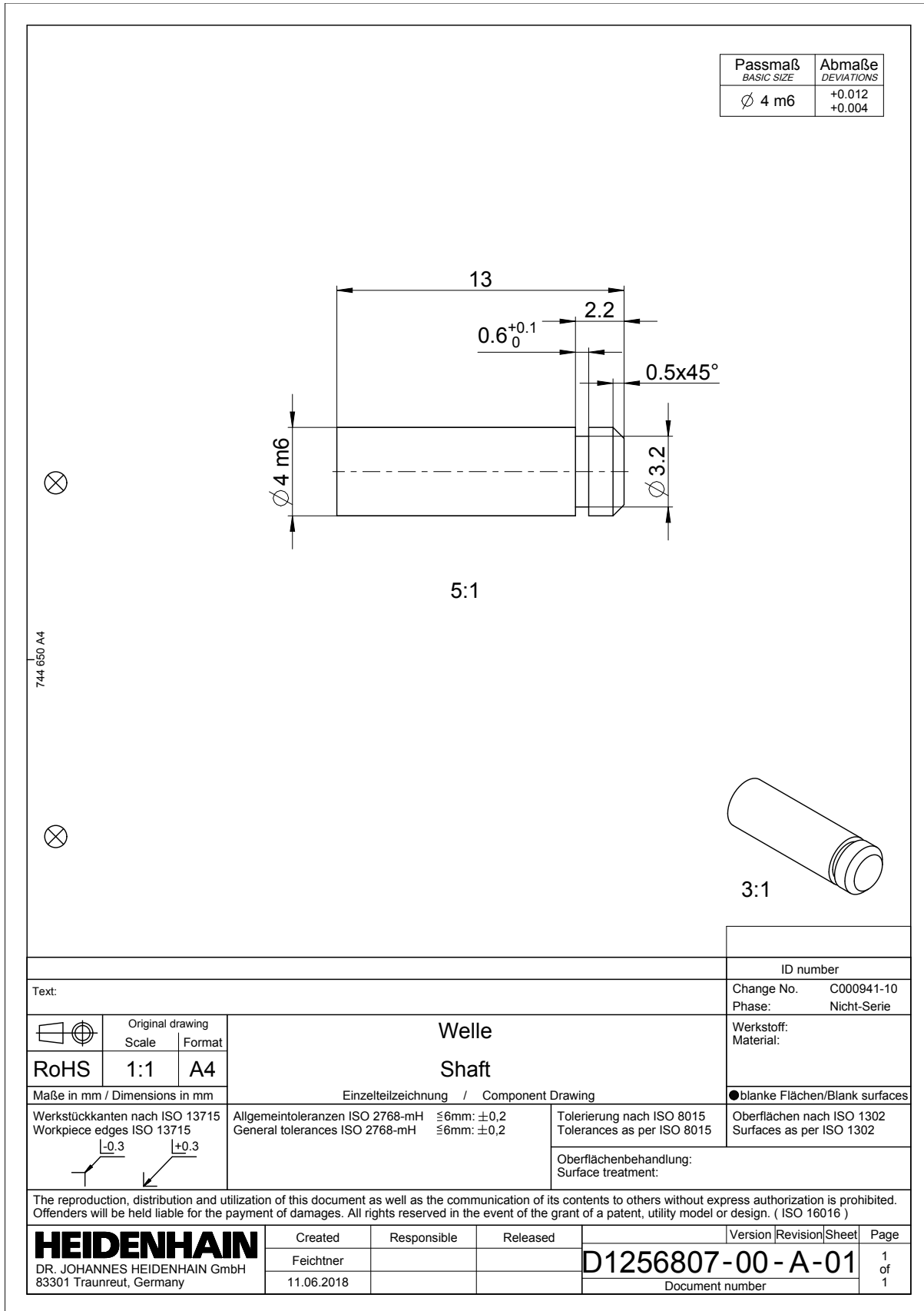
### Normteile

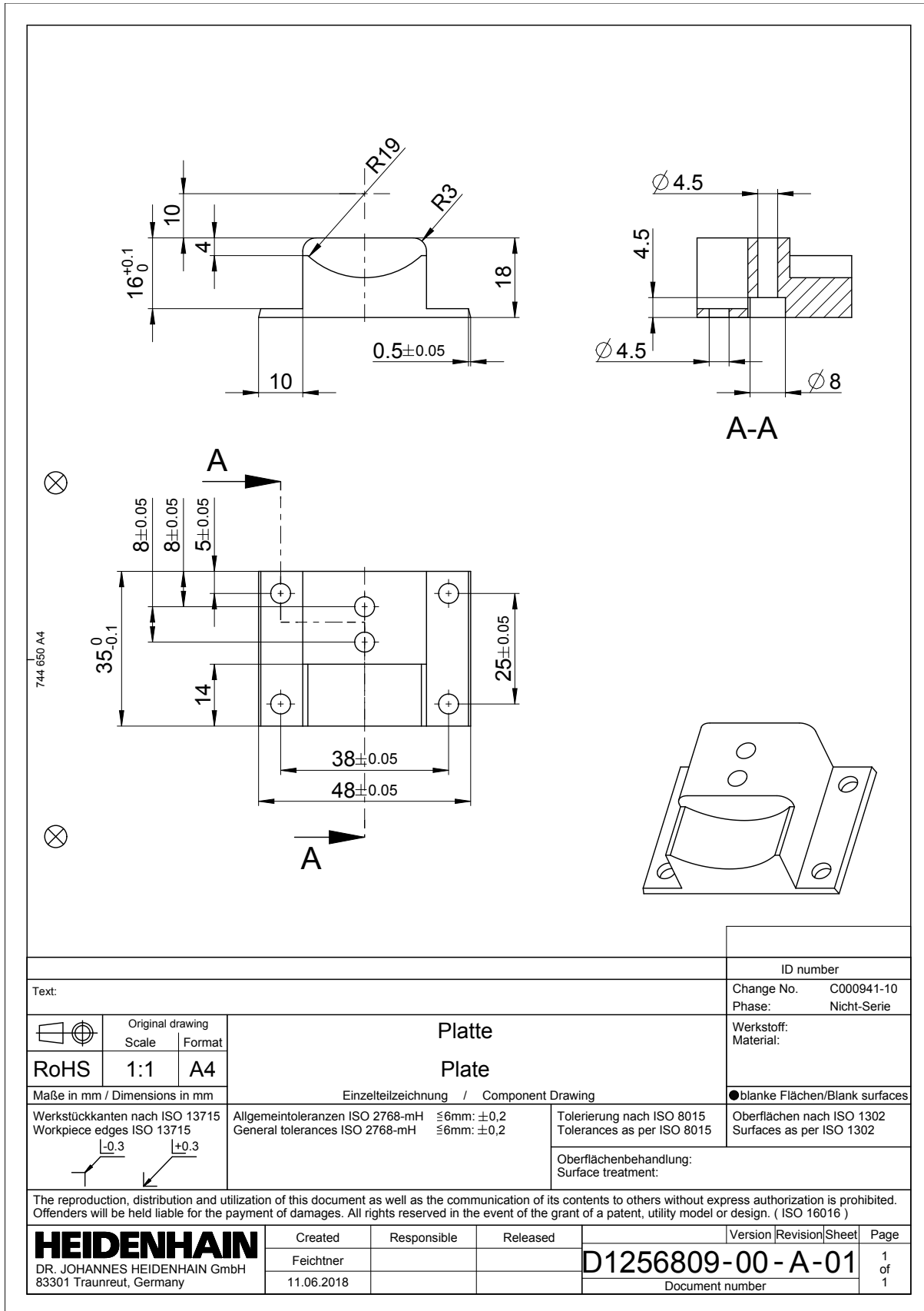
Anzahl	Benennung	Norm	Bemerkung
2	Zylinderschraube M4 x 18	DIN EN ISO 4762	Innensechskant
4	Zylinderschraube M4 x 6	DIN EN ISO 4762	Innensechskant
4	Senkschraube M3 x 8	DIN EN ISO 7046-1	Innensechskant
2	Gewindestift M4 x 6	DIN EN 27434	Mit Spitze
1	Zylinderstift Ø3 x 12 mm	DIN EN ISO 8734	
1	Sicherungsscheibe Ø 3,2	DIN 6799-3,2	
1	Dichtmittel (z.B. Silikon)		Dichtnut für Motorgehäuse



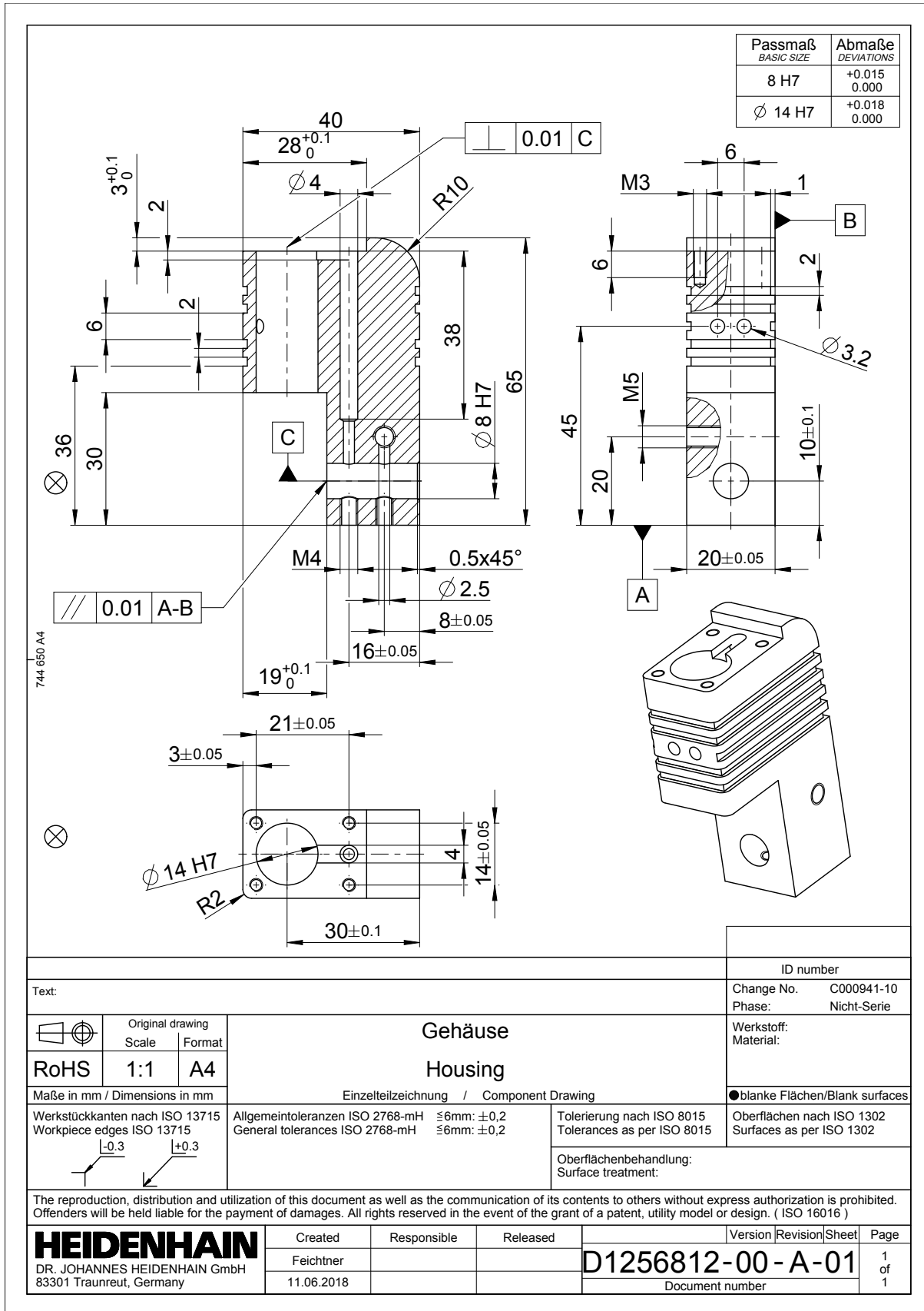






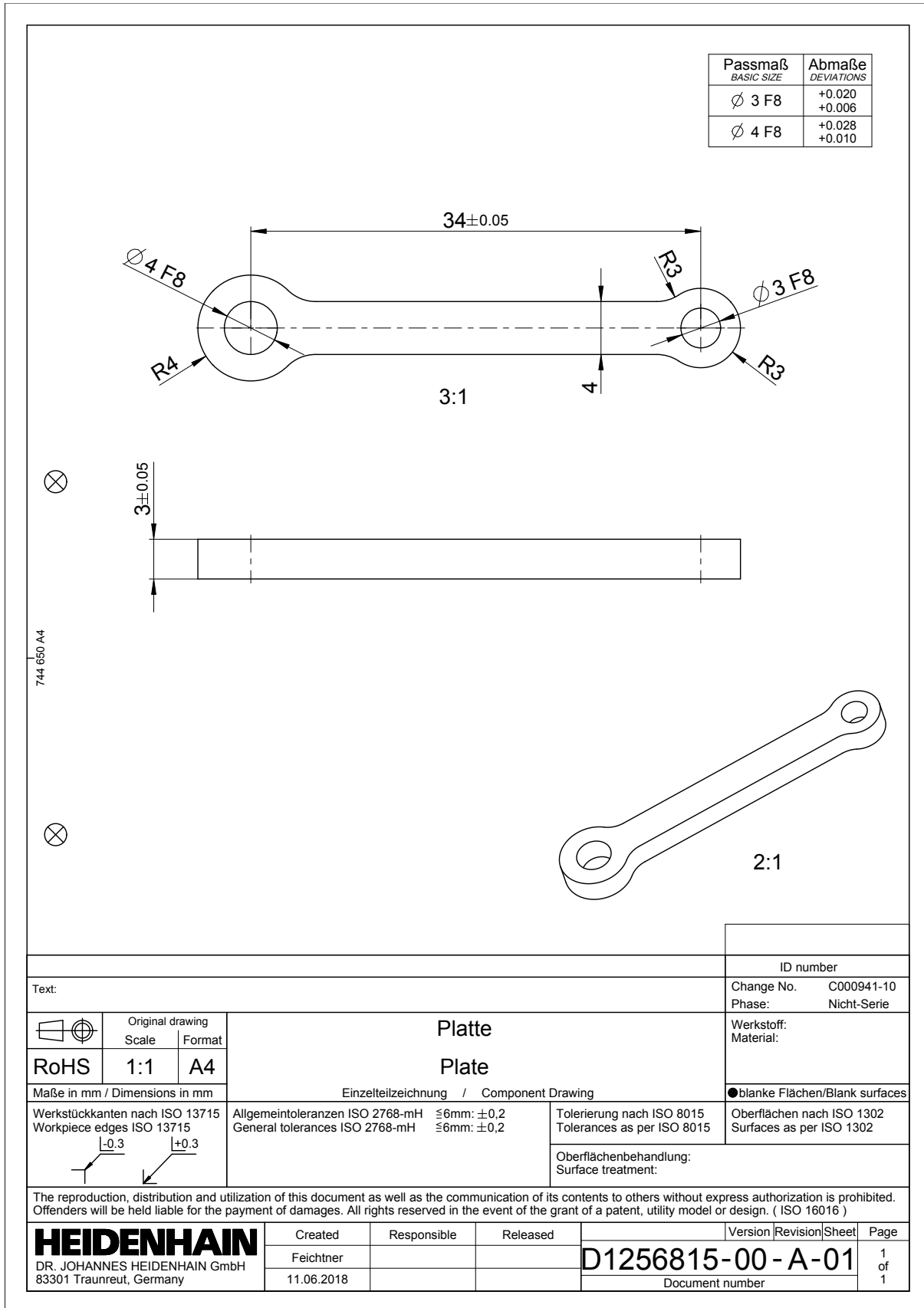


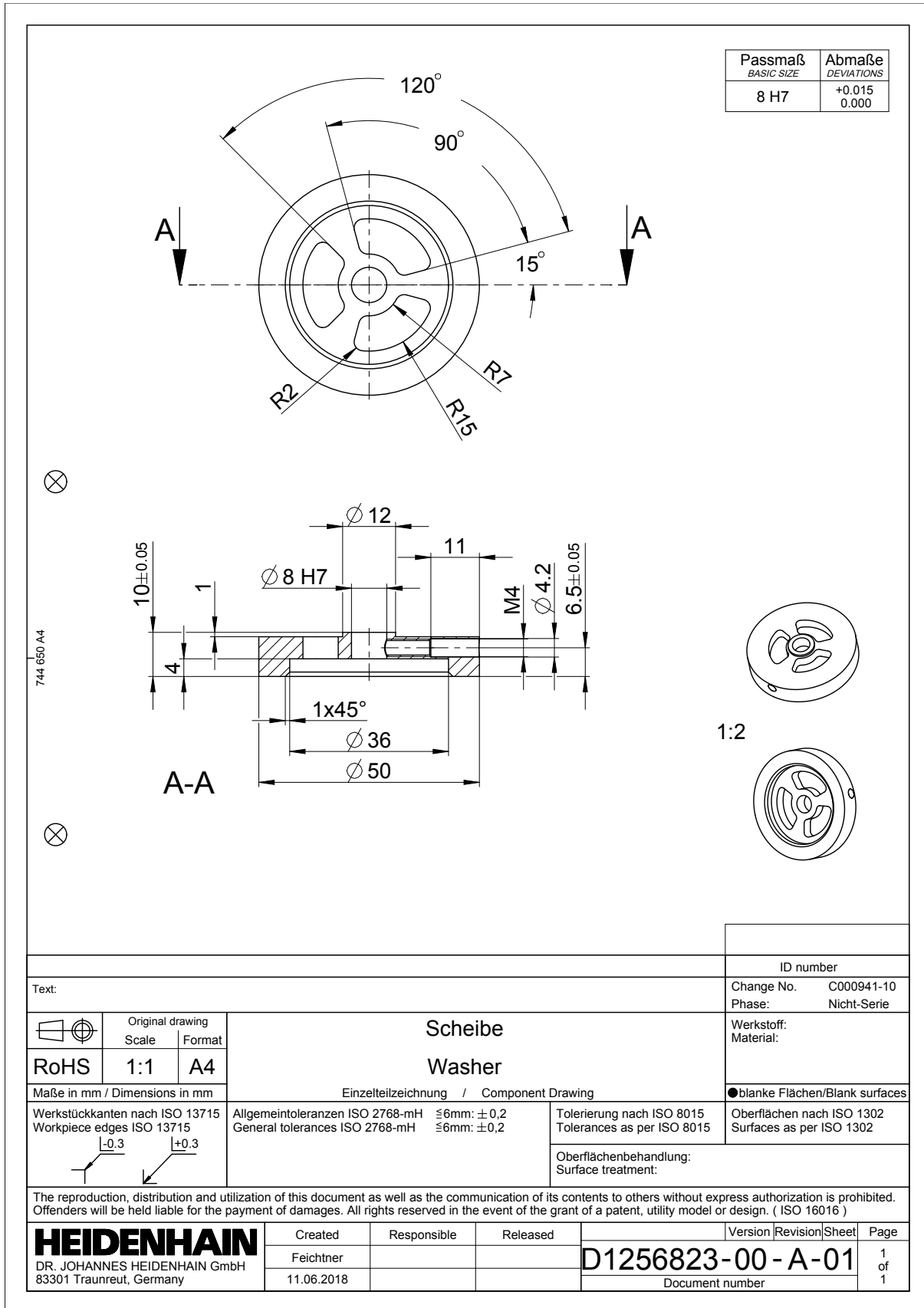
Text:		ID number	
Change No. C000941-10		Phase: Nicht-Serie	
Werkstoff: Material:		●blanke Flächen/Blank surfaces	
	Original drawing Scale: 1:1 Format: A4	<b>Platte</b> <b>Plate</b>	
Maße in mm / Dimensions in mm		Einzelteilzeichnung / Component Drawing	
Werkstückkanten nach ISO 13715 Workpiece edges ISO 13715 	Allgemeintoleranzen ISO 2768-mH ≤6mm: ±0,2 General tolerances ISO 2768-mH ≤6mm: ±0,2	Tolerierung nach ISO 8015 Tolerances as per ISO 8015	Oberflächen nach ISO 1302 Surfaces as per ISO 1302
		Oberflächenbehandlung: Surface treatment:	
The reproduction, distribution and utilization of this document as well as the communication of its contents to others without express authorization is prohibited. Offenders will be held liable for the payment of damages. All rights reserved in the event of the grant of a patent, utility model or design. ( ISO 16016 )			
<b>HEIDENHAIN</b> DR. JOHANNES HEIDENHAIN GmbH 83301 Traunreut, Germany	Created	Responsible	Released
	Feichtner 11.06.2018		
<b>D1256809-00-A-01</b> Document number		Version	Revision
		Sheet	Page
		1	1

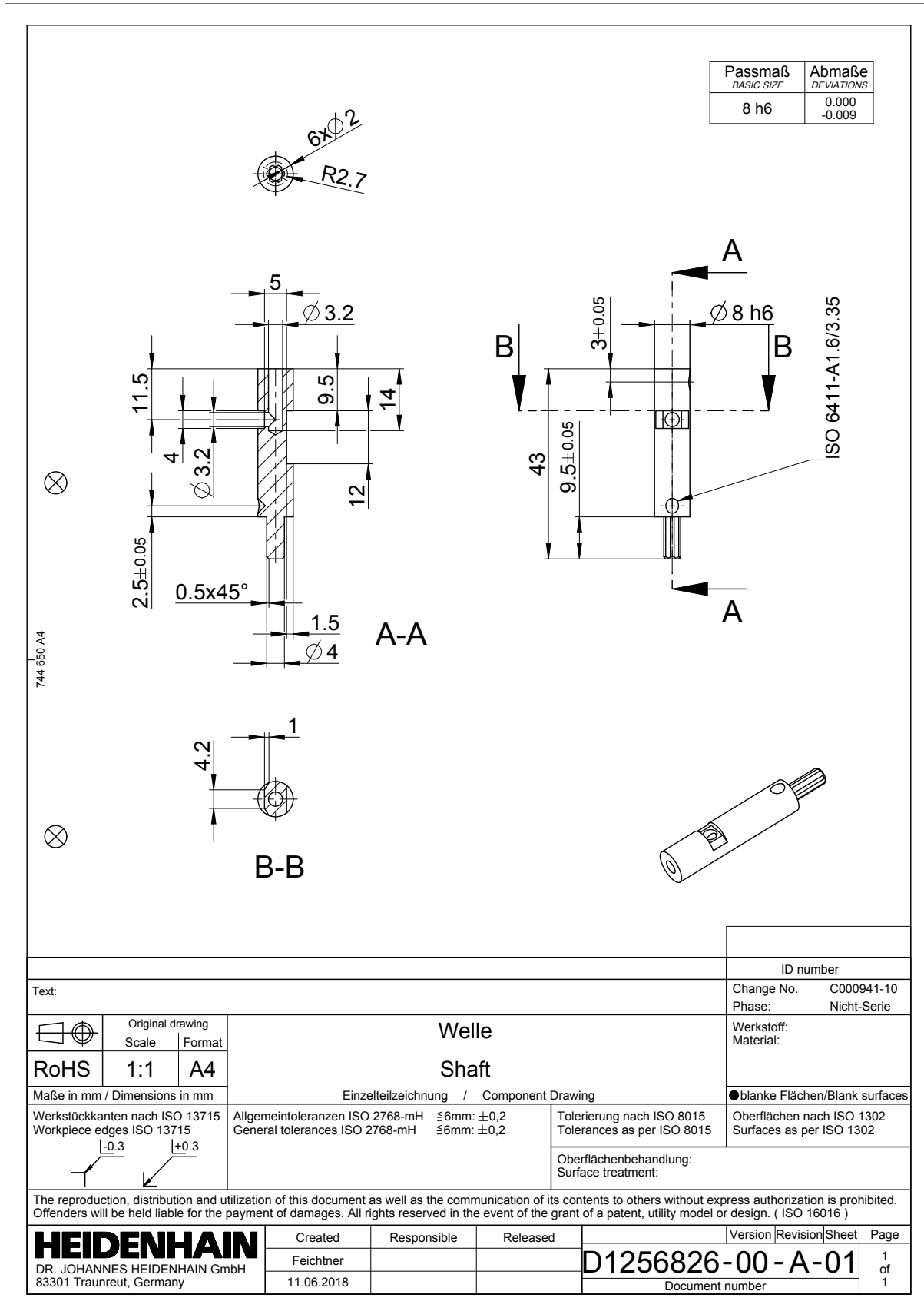


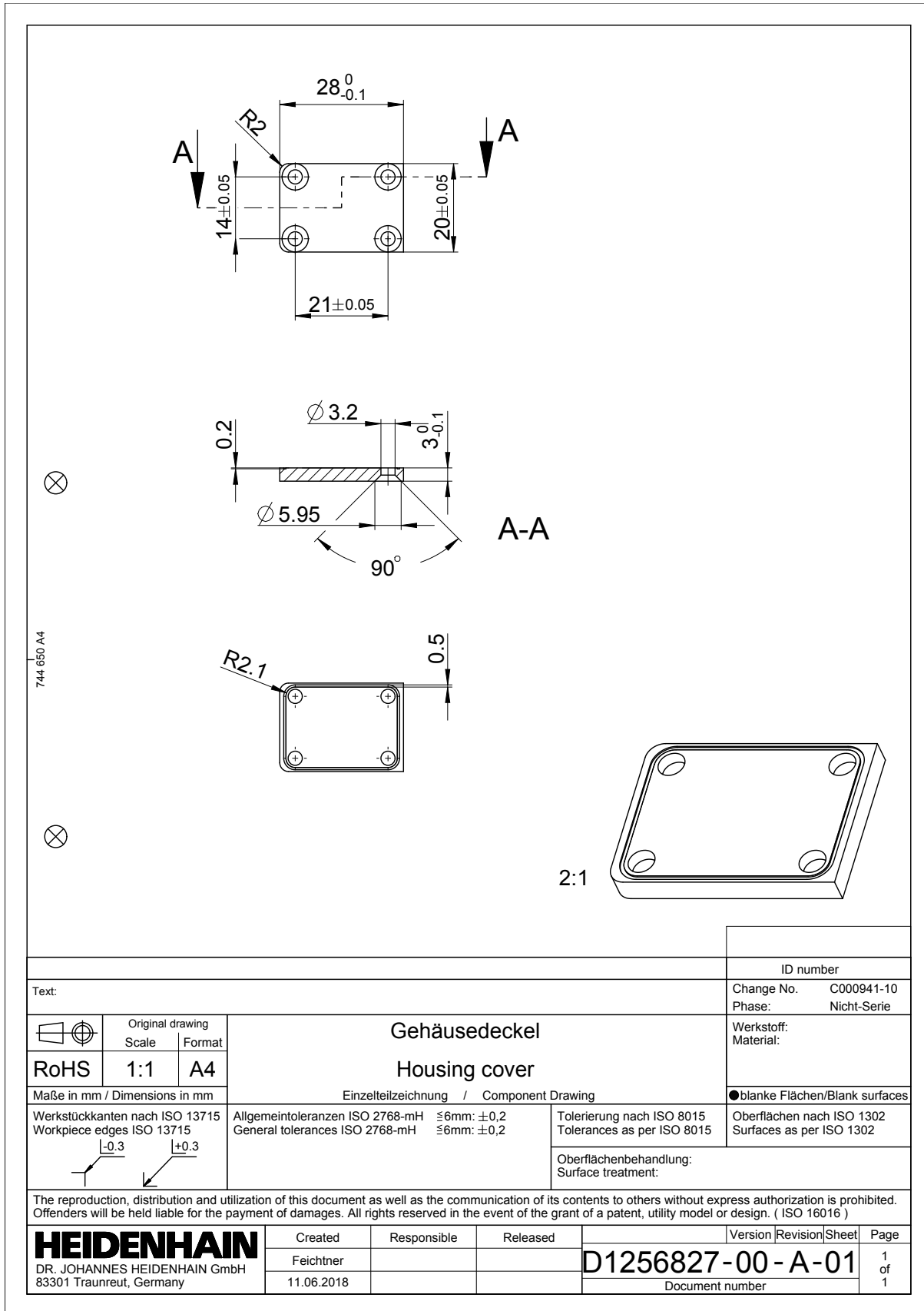
Text:			ID number							
			Change No.	C000941-10						
			Phase:	Nicht-Serie						
<table border="1"> <tr> <td></td> <td>Original drawing</td> <td>Format</td> </tr> <tr> <td></td> <td>Scale</td> <td></td> </tr> </table>				Original drawing	Format		Scale		<p><b>Gehäuse</b> <b>Housing</b></p> <p>Einzelteilzeichnung / Component Drawing</p>	
	Original drawing	Format								
	Scale									
<table border="1"> <tr> <td>RoHS</td> <td>1:1</td> <td>A4</td> </tr> </table>			RoHS	1:1	A4	<p>Werkstoff: Material:</p>				
RoHS	1:1	A4								
Maße in mm / Dimensions in mm			●blanke Flächen/Blank surfaces							
<p>Werkstückkanten nach ISO 13715 Workpiece edges ISO 13715</p> <p><math>-0.3</math> <math>+0.3</math></p>		<p>Allgemeintoleranzen ISO 2768-mH <math>\leq 6\text{mm}</math>: <math>\pm 0.2</math> General tolerances ISO 2768-mH <math>\leq 6\text{mm}</math>: <math>\pm 0.2</math></p>		<p>Tolerierung nach ISO 8015 Tolerances as per ISO 8015</p>						
		<p>Oberflächenbehandlung: Surface treatment:</p>								
<p>The reproduction, distribution and utilization of this document as well as the communication of its contents to others without express authorization is prohibited. Offenders will be held liable for the payment of damages. All rights reserved in the event of the grant of a patent, utility model or design. ( ISO 16016 )</p>										
<p><b>HEIDENHAIN</b> DR. JOHANNES HEIDENHAIN GmbH 83301 Traunreut, Germany</p>		Created	Responsible	Released						
		Feichtner								
		<p>D1256812-00-A-01</p>		<p>Version   Revision   Sheet   Page</p> <p>1   of   1</p>						
		<p>Document number</p>								

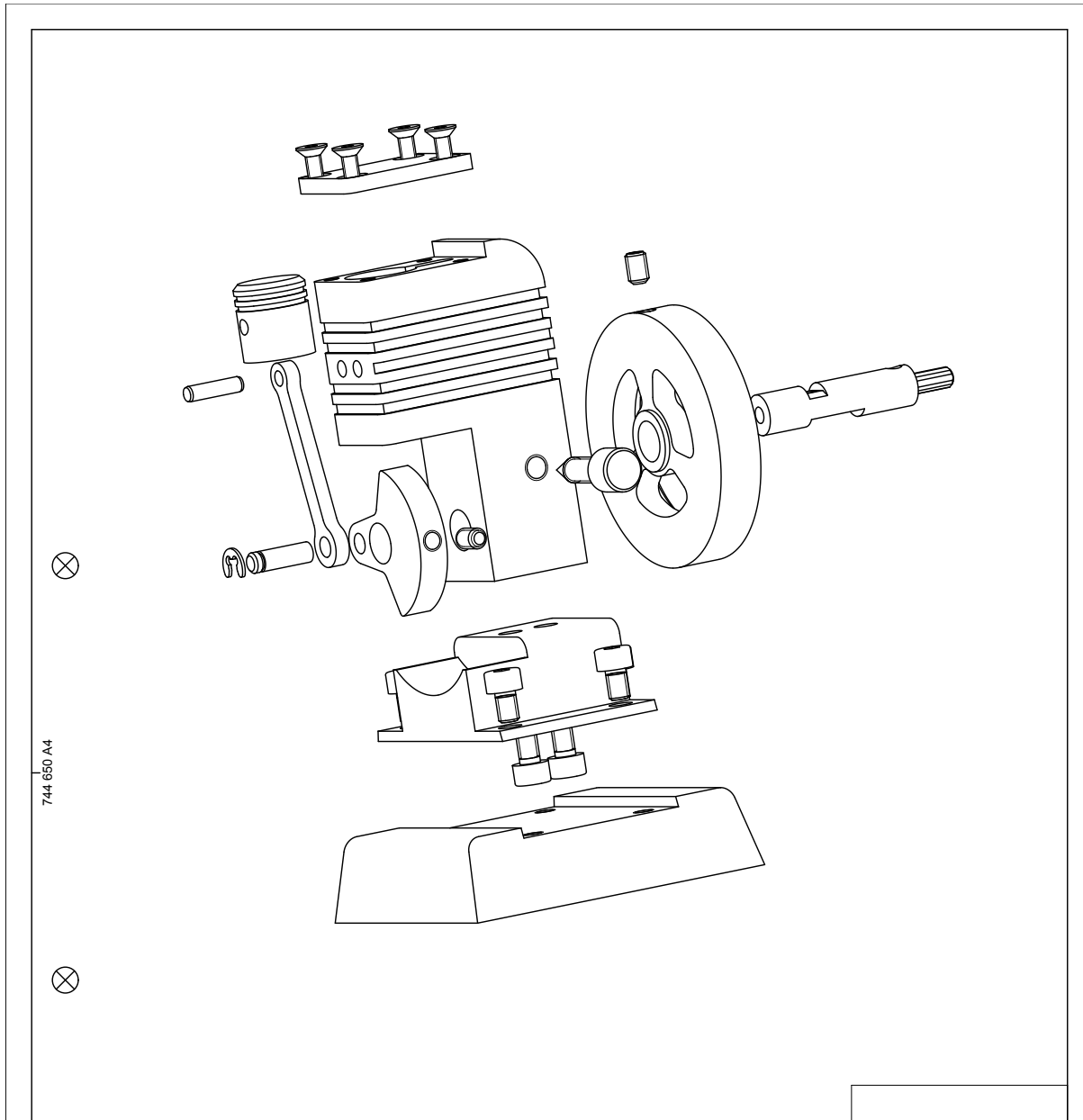












744 650 A4

Text:		ID number	
		Change No. C000941-10	Phase: Nicht-Serie
	Original drawing Scale   Format	<b>Motor motor</b>	
RoHS	1:1   A4		
Maße in mm / Dimensions in mm		Einzelteilzeichnung / Component Drawing	
Werkstückkanten nach ISO 13715 Workpiece edges ISO 13715 	Allgmeintoleranzen ISO 2768-mH $\leq 6\text{mm}$ : $\pm 0,2$ General tolerances ISO 2768-mH $\leq 6\text{mm}$ : $\pm 0,2$	Tolerierung nach ISO 8015 Tolerances as per ISO 8015	Oberflächen nach ISO 1302 Surfaces as per ISO 1302
		●blanke Flächen/Blank surfaces Oberflächenbehandlung: Surface treatment:	
The reproduction, distribution and utilization of this document as well as the communication of its contents to others without express authorization is prohibited. Offenders will be held liable for the payment of damages. All rights reserved in the event of the grant of a patent, utility model or design. ( ISO 16016 )			
<b>HEIDENHAIN</b> DR. JOHANNES HEIDENHAIN GmbH 83301 Traunreut, Germany	Created	Responsible	Released
	Feichtner 18.06.2018		
		<b>D1256856-00-A-01</b>	
		Document number	
		Version	Revision   Sheet   Page
			1 of 1

